

VERSALIFT

VA-200-F

Chassis mounted
articulated platform



2 x 70° bucket rotation



3-stage telescopic
boom



XPC controls with up to
4 actions at a time



3.5 t GVW



Available for class B
driving licence



《 VERSALIFT 》

VA-200-F on MB Sprinter | Iveco Daily



High-performance articulated lift that comes with automatic stabilization as standard

Incredible max outreach of 10,4 meter.
4°/5° outrigger levelling ability

Standard functions:

- Remote monitoring via Real Time Connect
- Home function
- Automatic stabilizer function: automatic levelling
- MEWP operating hours counter
- Anti-collision system driver cab
- Simultaneous movements : 4 movements at the same time (2 movement per joystick).

	■ Length	■ Height	■ Wheelbase
MB Sprinter	7588 mm	2230 mm	3665 mm
Iveco Daily	7458 mm	2263 mm	3750 mm



20,0 m



18,0 m



10.4 / 8.9
8.1m*



250 kg



2 man alu



104°



XPC



Horizontal & vertical
outriggers



N/A



3500 kg

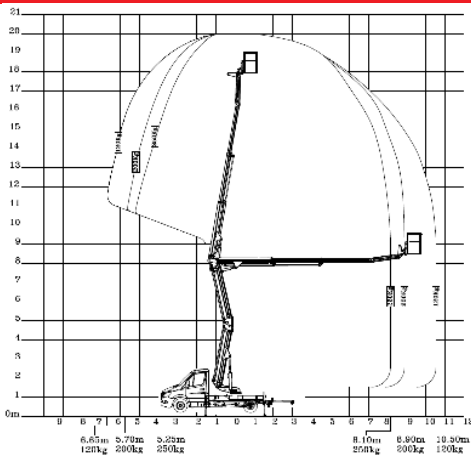


420°



4°/5°*

Diagramme(s)



Options

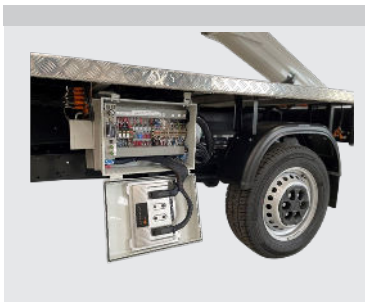
- Footplates w. holder
- 230/110V outlet in bucket
- Weather-resistant rubber ring mat for the floor
- Secondary guarding (upper control panel)
- Plastic protection strip
- 1 flat LED beacon (left-hand side/ platform)
- Protective cage for LED beacon
- Air hose or water hose
- Electric emergency pump
- ... contact us to see other options



Versalift control systems XPC



Standardised hydraulic architecture



Standardized electrical architecture



Remote monitoring via Real Time Connect as standard

Notes

Technical information is subject to change without prior notice. Images may show optional equipment. Installations and/or options may not be available in your specific region.

* Depending on the vehicle position

Distributor

Versalift International