

# SERVICE



# BULLETIN

**TO: All Versalift Users**

**SUBJECT: Pin & Bolt Markings on VOE Machines**

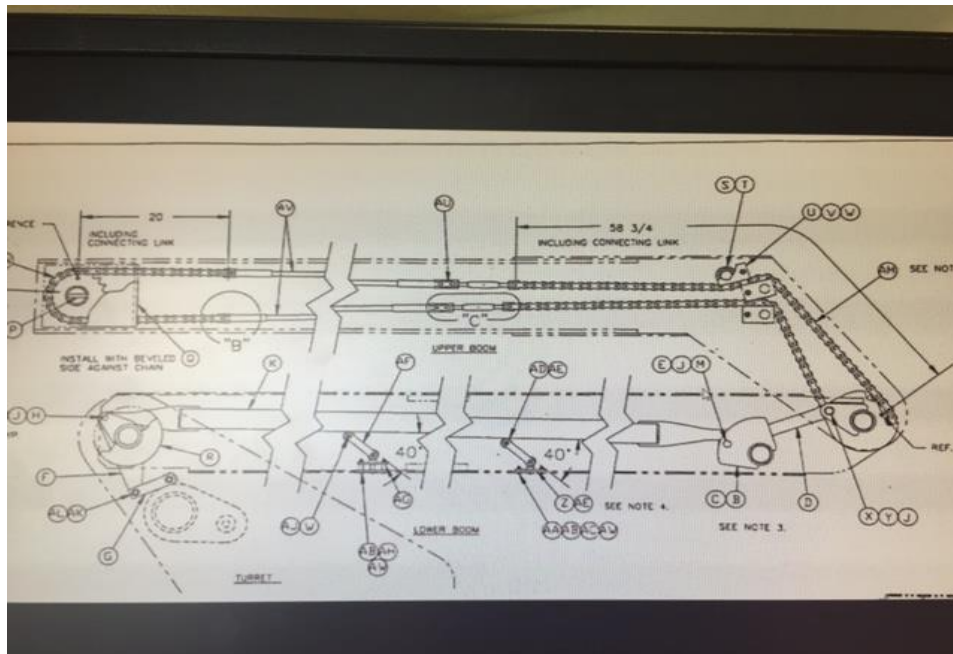
**SERVICE BULLETIN REF. 19/0917**

**DATE: 19<sup>th</sup> September 2017**

We have had a recent occurrence of a Spiral Pin shearing, causing a Link Pin on the Compensator Link Weldment to come out and tip the 2 Cages back on a VOE Platform.

We believe that this is an isolated incident and not a manufacturing issue, but following this incident, it is now a requirement that all critical fixings inside the Boom Assembly/Compensator Link (Spiral Pins, Link Pins, Nuts, Bolts) are marked up with Torque Seal (84006-2) to assist in monitoring the position of all fixings.

The continuing pages show a photographic breakdown of the areas that need to have the Sentry Seal applied and this should be routinely checked as well as being inspected at every LOLER Examination.



If you have any questions, or if further information is required, please contact the Versalift Technical Help Line on 01536 721010.



Remove Inspection Cover from Cab End of Boom to gain access to Compensator Link Assembly.



Apply Torque Seal to the Link Pin.



Apply Torque Seal to the Link Pin Assembly.



Apply Torque Seal to the 2 Spiral Pins through the Quadrant.



Remove Inspection Cover located below the Upper Boom Cylinder to gain access to the Guide Links.



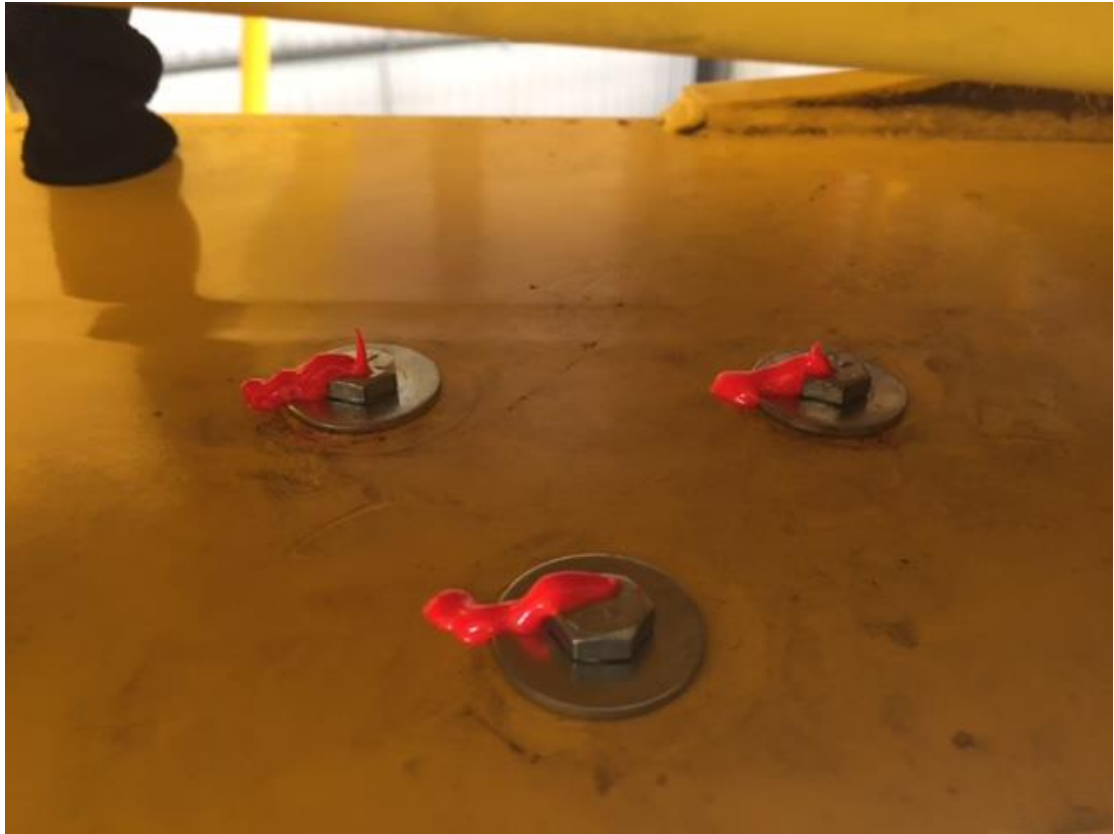
Apply Torque Seal to the Nut/Bolt that hold this Assembly in place.



Remove the Inspection Cover on the Boom, located above the Lower Boom Cylinder to gain access to the Guide Links.



Apply Torque Seal to the Nut/Bolt that hold this Assembly in place.



Apply Torque Seal to the Bolt Heads located on the underside of the Lower Boom.

\*\*\*\*\*

Remove the Cover at the Cage End of the Platform to gain access to the Turret Arm Assembly.



Apply Torque Seal to the Link Pin Assembly. (Both Sides)



Apply Torque Seal to both sides of the Link Pin.



Apply Torque Seal to the Spiral Pin.



Apply Torque Seal to both of the Nut/Bolt/Spacer Assembly as per image.



Image above is to highlight how the 2" X 1/4" Spiral Pin should seat in the Quadrant Assembly

If you require any Torque Seal, please contact us on the number below:

**Versalift Distributors (UK) Ltd 1 Altendiez Way Latimer Park Burton Latimer Northants. NN15 5YT**  
Tel. 01536 721010 Fax 01536 721110 Email: [admin@versalift.co.uk](mailto:admin@versalift.co.uk)

