

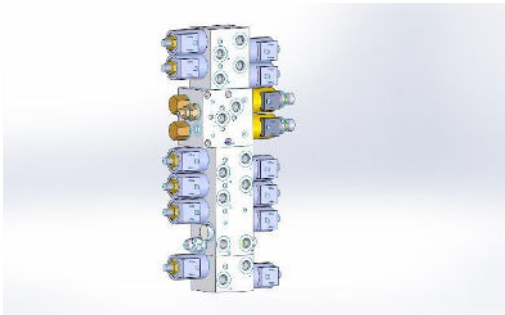


Field tip # 22 Issued by Time Export, Denmark.

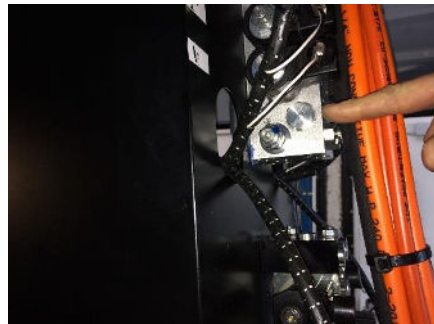
MEMORANDUM TO: Versalift Distributors/Service/End-Users

SUBJECT: Hydraulic levelling problem ETL with TECNORD single / Dual Inlet Valve

We have discovered a problem on some levelling systems operating on TECNORD valve. The problem is shown as the bucket/Gage is getting behind the function and after just one or two operations by the main boom. The reason for the problem is a cartridge valve with a leak. If you have a system with this problem then Versalift must be contacted, who will arrange for an Engineer to attend and replace the cartridge valve.



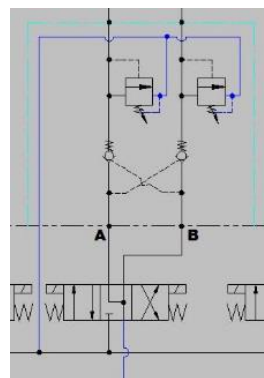
TECNORD VALVE



Cartridge valve to change when damaged
(double pilot operated checkvalve 3070300-06)



Cartridge valve 3070300-06
(Parts will be supplied by Versalift)



Hydraulic schematic

For any further assistance, please contact the Versalift Service Department on:

01536 721010 Option 1.

Many Thanks

David Northover
Service Supervisor