

SERVICE



BULLETIN

SUBJECT: ET 26 NEXS Docking Switch Wiring Modification

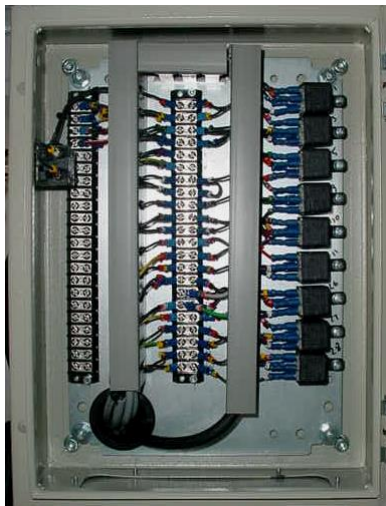
SERVICE BULLETIN REF. 06/0102

DATE: January 2006

We have discovered a problem with the ET 26 & 30 NEXS machines out in the field; an operator has found that you can defeat the PTO/HANDBRAKE interlock. To overcome this problem minor a wiring change is required on all machines in service.

The wiring change is as follows: - using wiring diagram n°s see note below.
 1. The normally open wire of the docking switch (core n° 1) VDL terminal strip n° 5 found in the pedestal junction box see photograph below

**Note: - For Vauxhall Vivario use wiring diagram n° 1160-57 revision "c"
 For Mercedes Sprinter use wiring diagram n° 1160-62 revision "b"
 For Ford Transit use wiring diagram n° 1160-53 revision "b"**



Remove terminal wire n° 5 on the left hand side of the terminal strip and check for voltage using a voltmeter, the wire to be moved is the one **without voltage** on it when checked with the voltmeter, the wire n° 5 that has voltage on it needs to be refitted to terminal position n° 5. When you have correctly identified the wire coming from the docking switch (core n° 1) renumber this to terminal n° 4 and fit the wire to position n° 4 of the terminal strip

If you have any questions, or if further information is required, please contact the Versalift Technical Help Line on 01536 721010