

**Service Bulletin: LAT-160F (serial numbers 2013-2015)**

**Date of issue:** 6<sup>th</sup> June 2019

Versalift United Kingdom Limited have identified a potential issue with the LAT-160F lift platform from serial number years 2016 to 2019. Under due diligence the Company are issuing this Service Bulletin for lift serial number years 2013-2015.

Although no evidence of failure has been seen on the LAT-160F lifts during the 2013-2015 manufacturing period Versalift are asking Operators to carry out an in-service inspection, as detailed below, on these vehicles as listed below in *Table 1*.

*Table 1:* LAT-160F (serial numbers 2016 to 2019)

Registration Number	Serial Number	Registration Number	Serial Number
BU14 WLK	DKLAT130025		DKLAT150010
BT14 SYF	DKLAT130026	BD16 MZF	DKLAT150002
NU14 XHW	DKLAT130023		DKLAT150003
NX64 PHU	DKLAT130024		DKLAT150004
HX15 WDF	DKLAT130029	HN65 OEZ	DKLAT150005
	DKLAT130028	HX16 OAC	DKLAT150006
	DKLAT130027	BC16 UEM	DKLAT150007
	DKLAT130030	BC16 UEL	DKLAT150008
	DKLAT130031	BC16 UEK	DKLAT150009
	DKLAT130032	BC16 UEN	DKLAT150001

The initial investigation for vehicles manufactured between 2016-2019, instigated during routine maintenance, showed that there may be bearing seizure at the lower end of the compensating link rod, shown in *Figure 1*.



*Figure 1:* LAT-160F Compensating link location.

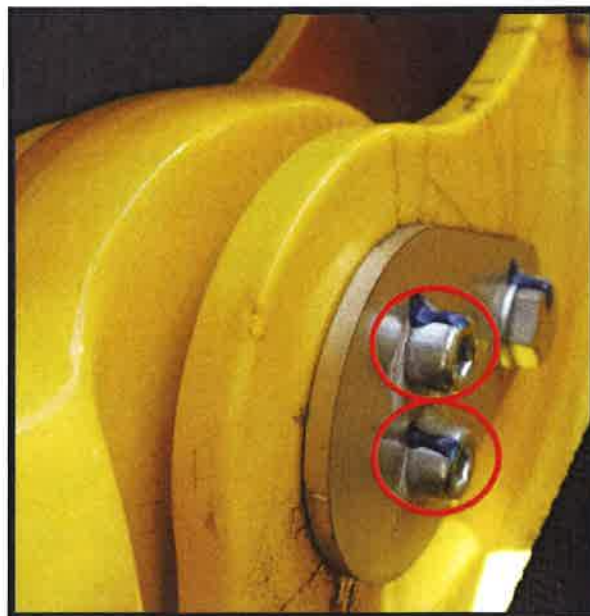
### In-service inspection

To carry out this inspection please check for any sign of damage around the lower compensating link bearing area as shown in *Figure 2*. Specifically, please ensure there is grease between the bearing and the pin; grease should be pumped into the grease nipple, circled below, until excess grease is visible.



*Figure 2:* Compensating link grease nipple location

During operation of the lift please check that both retaining plates do not rotate and that there is no excessive play/ movement in the two bolts securing the pear shape retaining plate shown below in *Figure 3*.



*Figure 3:* Pear shape washer location at lower end of compensating link.

**Summary**

Versalift have taken these precautionary measures to reduce any potential risk to its customers and their operators. Due to the critical functionality of this component Versalift ask that this in-service inspection be carried out immediately upon receipt of this bulletin. If any wear or damage is visible, then please remove the vehicle from use and contact the After Sales team.

If you require any further information, then please contact the After Sales team on:  
Tel: 01536 721010.

Issued By: Tom Johnson

Position: Versalift UK Engineering Manager

Signature: 

