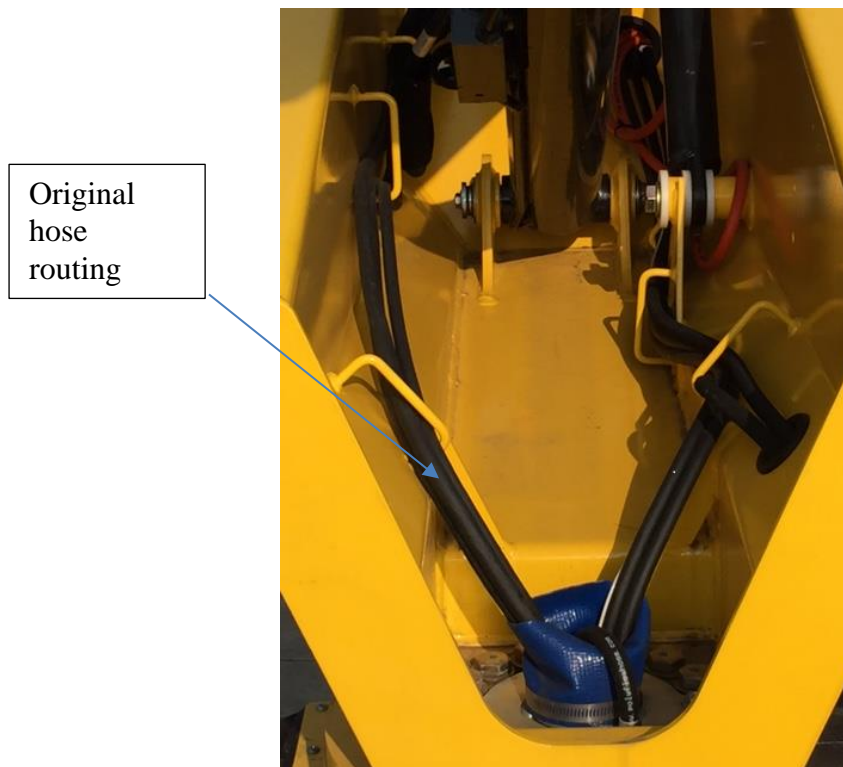




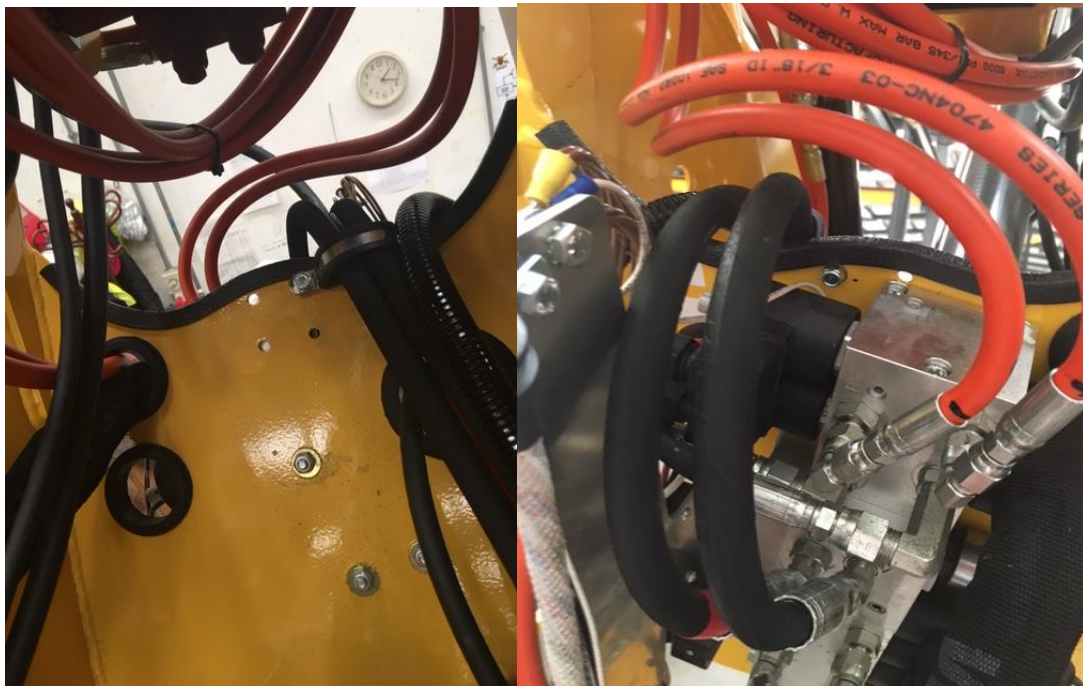
ETM Pressure – return hose routing issue

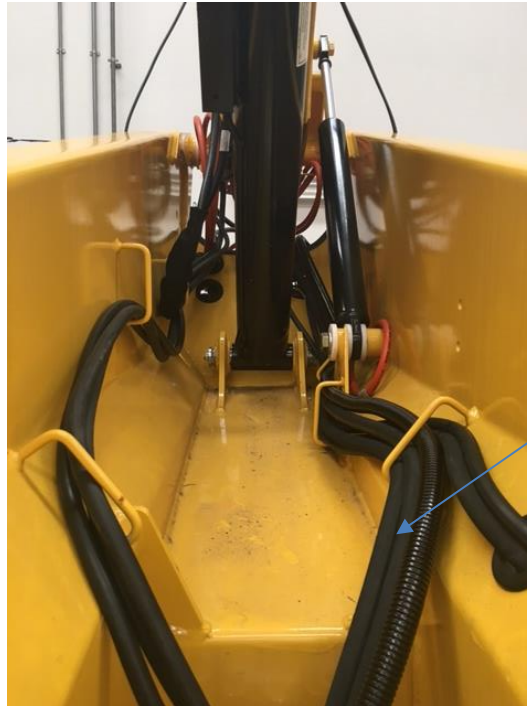
We have an issue where the pressure and return hoses from the pedestal valve to the turret valve are routed in such a way that it wears away the protective rubber from the hose, exposing the metal braid which in turn wears the steel pipe on the side of the main lift ram. The pictures below show both issues.





We can engineer away this issue by routing the two hoses on the other side of the turret. The pictures below show the routing and with the addition of one P clip secure them into position.





New hose routing

However even when routed like this they still could be pushed against the ram by the blue collar. By removing the collar we now have the flexibility on both the hoses and the electrical cables.



If you have any questions, or if further information is required, please contact the Versalift Technical Help Line on 01536 721010