



LAT160-F

VAN MOUNTED PLATFORM



6.5 - 7.0T
GVW



ARTICULATED
TELESCOPIC
BOOM



110°
FLYBOOM



CLASS LEADING
PAYLOAD



TYPE
APPROVED

SPECIFICATIONS

	6.5 T GVW Iveco Daily 65C	7.0 T GVW Iveco Daily 70C
Working height	16.5m	16.5m
Platform height	14.5m	14.5m
Max. outreach	7.3m	7.3m
Max. outreach with optional load-cell*	8.4m	8.4m
Max. bucket capacity	200kg	200kg
Flyboom	110°	110°
GVW	6500kg	7000kg
Max. slope	5°/10°	5°/10°
Payload (after driver, passenger & fuel)**	1800kg	2300kg

* At additional cost **Subject to options fitted

STANDARD

- Telescopic upper boom
- Articulated lower boom
- 110° flyboom
- Single joystick control system
- 12V DC emergency lowering system
- A-frame stabilisers
- 200kg SWL bucket
- Class-leading payload
- Type Approved

OPTIONS

- Extended outreach with load-cell (120kg SWL one person)
- Twin joystick control system
- Slew rotation interlock
- Walk-in bucket
- 1kV certified insulation
- Chapter 8 compliance
- Bespoke storage racking

LAT160-F

VAN MOUNTED PLATFORM



Massive storage and load capacity



12V DC emergency ground controls

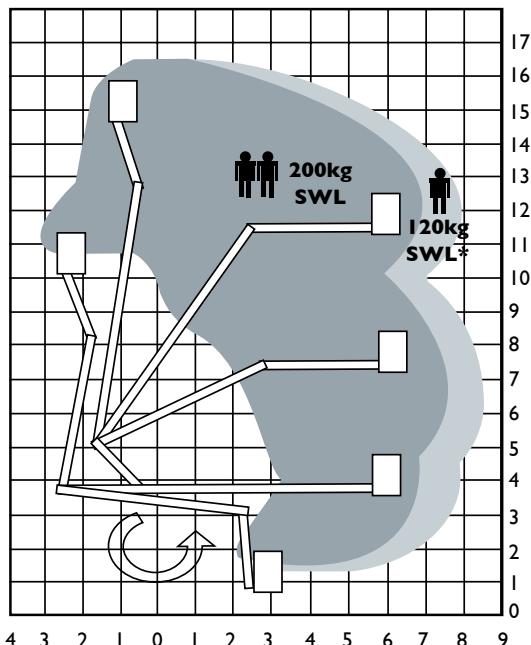


Proven A-frame stabiliser system



Single joystick control system for improved health and safety

LAT160-F METRES



Working envelope at 200kg bucket SWL
*Working envelope at 120kg bucket SWL



Articulated, telescopic boom maximises the working envelope of the platform

The photographs in this brochure are for promotional purposes only. Specifications are subject to change without notice.



1 Altendiez Way,
Latimer Park,
Burton Latimer,
Kettering, NN15 5YT
T: 01536 721010
F: 01536 721111
E: sales@versalift.co.uk
W: www.versalift.co.uk



TRACK MOUNTED



PICK-UP MOUNTED



VAN MOUNTED



CHASSIS MOUNT



TRUCK MOUNTED



INSULATED PLATFORM